



Sublimation Ink Application

1、 Application:

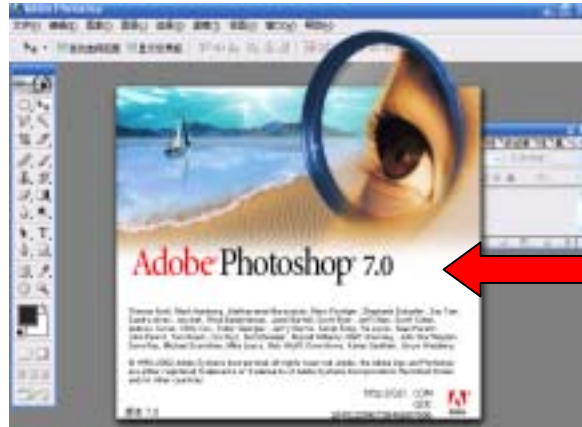
Porcelain Cup、 Tile and Silk –like Fabric etc。

(Note:it need special transfer coating such as glaze on the surface of porcelain cup and tile.)

2、 Usage:

(1) Print setting:

①Software (following chart)

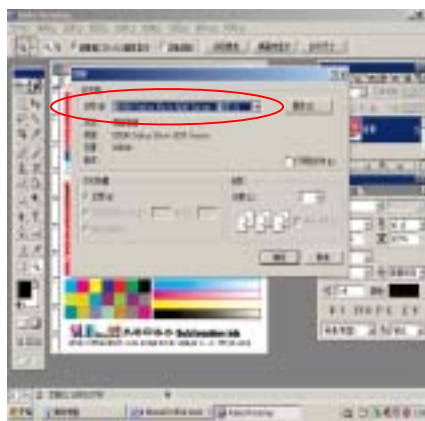


② Select Printers (following chart):

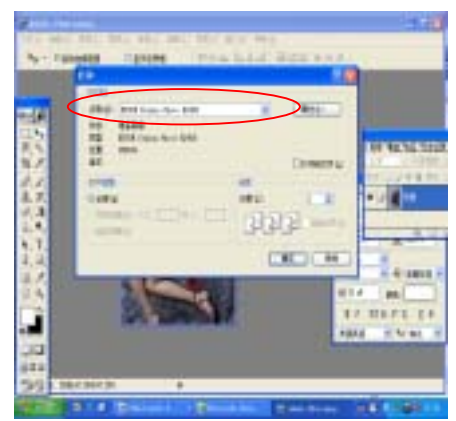
For Epson C67



For Epson R230



For Epson R2400





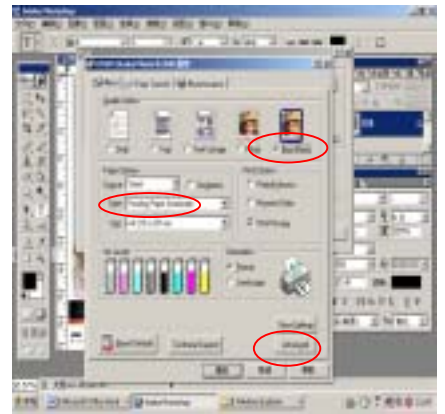
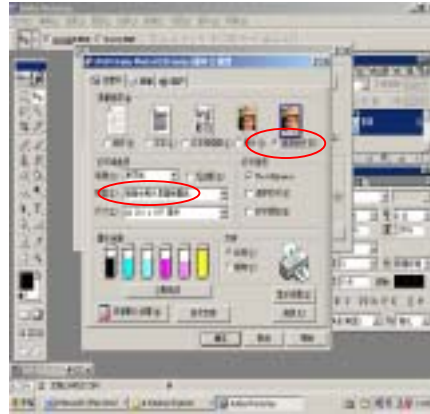
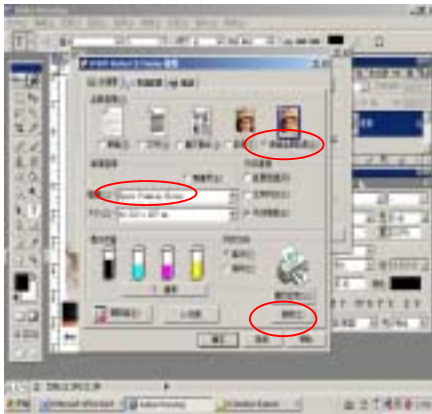
③ Print setting:



For Epson C67

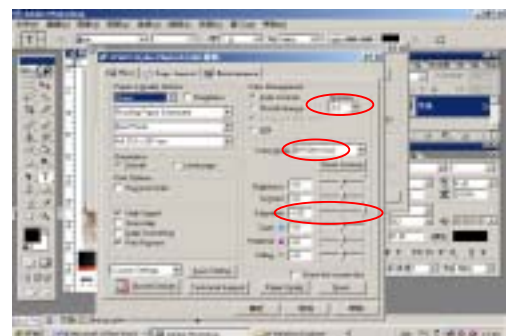
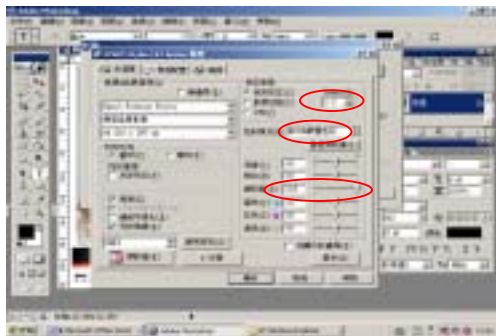
For Epson R230

For Epson R2400



For Epson C67

For Epson R2400



(2) Transfer Method (Let's take Silk -like Fabric for example):

A、Prepare: One Heat Press Machine、Printed Picture on Paper、Silk -like Fabric。





- B、 First set up the Heat press machine temperature and pre-heat it to about 220°C, set transfer time 70 seconds simultaneously。



- C、 Stick the picture conversely into the front of Silk –like Fabric.



- D、 When the temperature goes up to 220°C , put the Silk –like Fabric neatly on the Heat Press Machine and press the handle of the Machine tightly .(Following Chart)。





热转印墨水

Sublimation ink

For EPSON

E、When time gets to 70 seconds, turn off the switch, lift the press machine, take out of the Silk –like Fabric from the machine。

F、 Hold the Silk –like Fabric, take out of the sticker, finish the transfer procedure。

(Be caution: it is hot when you touch .)



3、 Note:

- A、 Before transfer ,You need to pre-set transfer temperature and time of the Heat Press Machine first accordingly .
- B、 When you are ready to transfer , Please carefully put the needing transfer target neatly.
- C、 Transfer temperature and time is related to the transfer material you choose.